



Wilo-Stratos PARA 25/1-12, 30/1-12

Design

Glandless circulator with screwed connection.
 EC motor with automatic power adjustment.
 Supplied as standard with cable for easy electrical connection.

Application

Hot-water heating systems of all kinds, air-conditioning systems, closed cooling circuits, industrial circulation systems, circulation in solar thermal technology and geothermal systems.

Options

- External control via 0-10V or PWM
- Control mode Δp -c (constant), Δp -v (variable)
- Control mode selection and differential pressure setpoint setting for Δp -c, Δp -v via operating button
- Special version without operating button
- All possible combinations of functions and equipment are available (see page 25)
- Version with cable according to customer specification
- Delivery in collective packaging (72 pumps/package)
- Delivery with thermal insulation
- Cold insulation Cooling-Shell as accessories

- Energy efficiency class A
- Maximum efficiency thanks to ECM technology
- Up to 80% electricity savings compared to uncontrolled circulation pumps
- High starting torque for reliable starting
- For all heating and cooling systems in the temperature range of -10 °C to +110 °C
- Prevention of flow noise
- Safety and comfort during installation and operation
- Functions and space-saving design were specially adapted to the requirements of the OEM market. Optimum output even in narrow installation situations.
- Standard delivery with cable for an easy electrical connection
- Convenient setting of the pump via external control signals or the operating button
- Cast iron pump housing with cataphoretic (KTL) coating for the prevention of corrosion from condensation formation

Type key

- Example: **Wilo-Stratos PARA 25/1-12 T1**
- Stratos** Electronically controlled high-efficiency pump
- PARA** Pump range adapted to requirements of the OEM market
- 25/** Nominal connection diameter
- 1-12** Nominal delivery head range [m]
- T1** Type key for combinations of function and equipment
- 12 h** Position of electronic module, special version
- (not specified)** Position of electronic module 6h, standard version

Type Key Example:

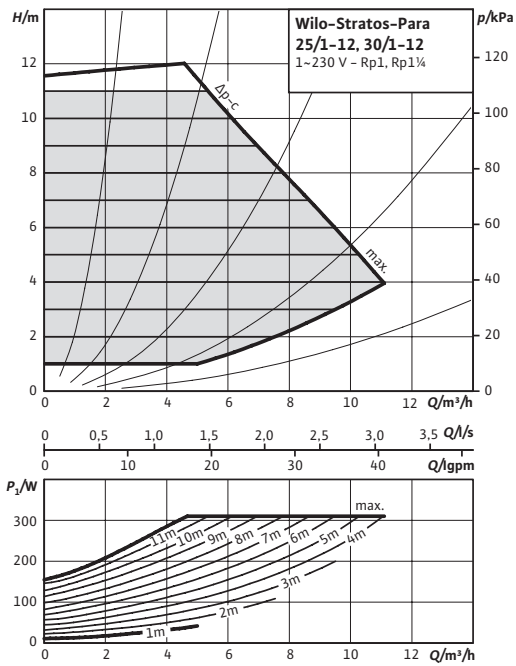
Technical data	
Approved fluids (other fluids on request)	
Heating water (in accordance with VDI 2035)	•
Water-glycol mixtures (max. 1:1; above 20% admixture, the pumping data must be checked)	•
Power	
Energy efficiency index (EEI)	≤ 0.23
Max. delivery head H_{max}	12.00 m
Max. volume flow Q_{vmax}	10.0 m³/h
Permitted field of application	
Temperature range at max. ambient temperature	of 25°C = -10 to 110°C Of 40°C = -10 to 90°C Of 45°C = -10 to 80°C Of 50°C = -10 to 65°C Of 55°C = -10 to 50°C Of 60°C = -10 to 35°C Of 65°C = -10 to 20°C
Maximum static pressure p	10 bar
• = appropriate, - = not appropriate	

Technical data	
Electrical connection	
Mains connection	1~230 V, 50/60 Hz
Motor/electronics	
Electromagnetic compatibility	-
Emitted interference	EN 61800-3;2004+A1;2012 / residential area (C1)
Speed control	Frequency converter
Interference resistance	EN 61800-3;2004+A1;2012 / industrial environment (C2)
Protection class	IP X4D
Insulation class	F
Minimum suction head at suction port for avoiding cavitation at water pumping temperature	
Minimum suction head at 50 / 95 / 110 °C	3 / 10 / 16 m
• = appropriate, - = not appropriate	

Stratos PARA	Speed	Power consumption 1~230 V	Current at 1~230V	Motor protection
	n rpm	P_1 W	I A	
25/1-12	1400 - 4800	16 - 310	0.16 - 1.37	integrated
30/1-12	1400 - 4800	16 - 310	0.16 - 1.37	integrated

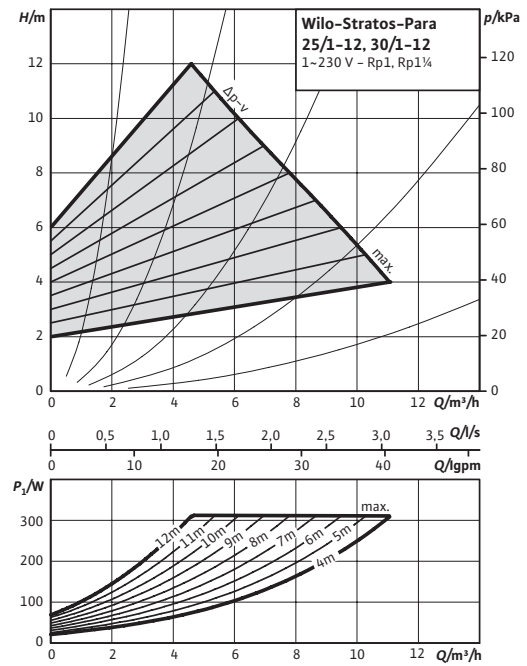
Pump curves

Δp -c (constant)



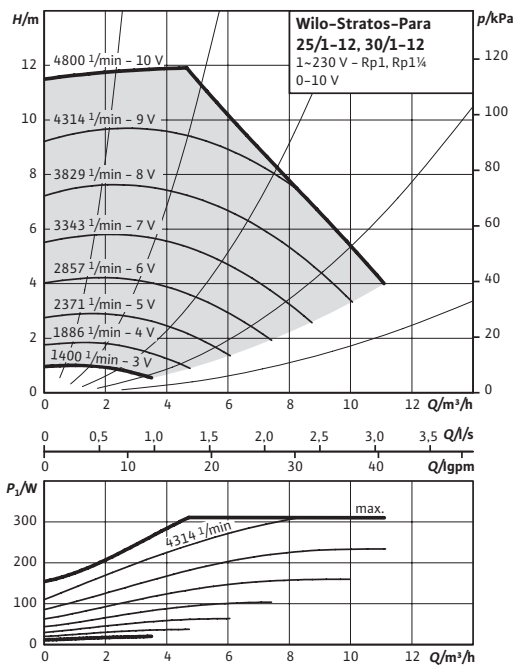
Pump curves

Δp -v (variable)



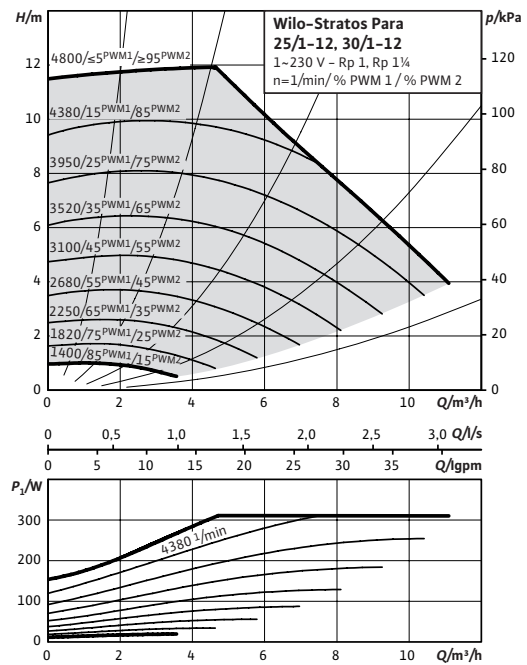
Pump curves

External control mode via Analog-In 0-10 V

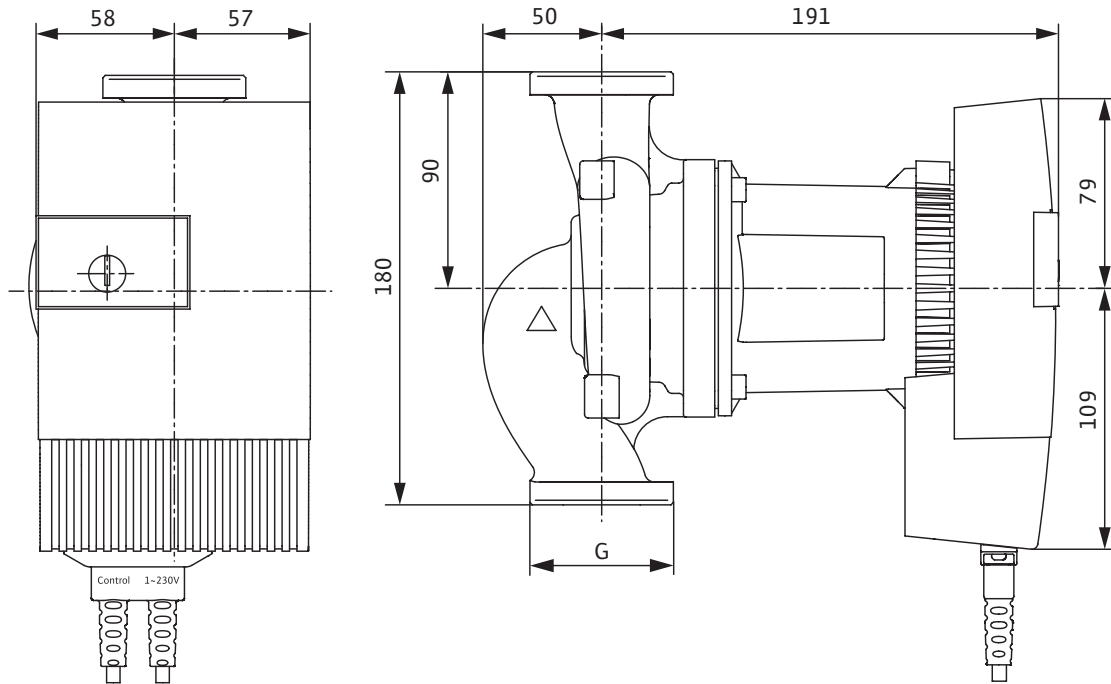


Pump curves

External control via PWM



Dimension drawing



Technical data

Designation	Stratos PARA 25/1-12	Stratos PARA 30/1-12
Threaded pipe union	Rp 1	Rp 1¼
Thread	G 1½	G 2
Overall length l_0		180 mm
Weight approx. m		6.2 kg
Dimensions $L1$		90 mm

Materials

Pump housing	Grey cast iron (EN-GJL-200)
Impeller	Plastic (PPS - 40% GF)
Pump shaft	Stainless steel (X39CrMo17-1)
Bearing	Carbon, metal impregnated